

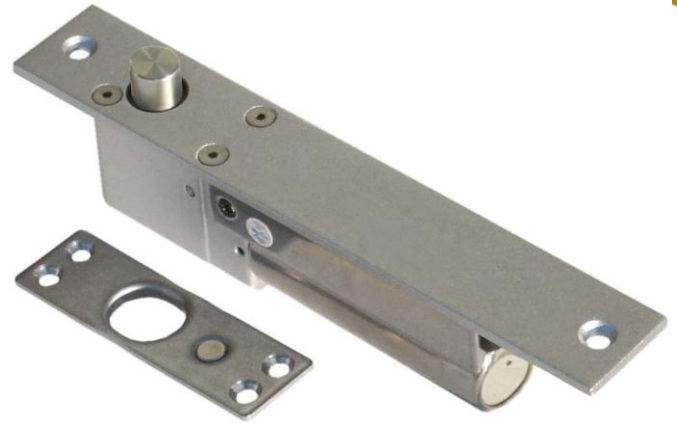
Electric Deadbolt

SD-997-BQ

Fail-Safe, Stainless-steel bolt

Features:

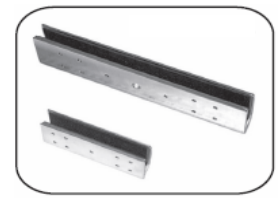
- ▶ Adds concealed deadbolt security to most wood or hollow metal doors, with the added convenience of electrical operation.
- ▶ Magnetic switch senses door position for positive locking.
- ▶ Attempts to lock several times if door not closed properly to prevent solenoid from burning out.
- ▶ Fail-safe operation (unlocks if power is lost).
- ▶ Stainless-steel bolt, 5/8" diameter, 5/8" throw.
- ▶ Includes control wire which allows for releasing without cutting unit's power.
- ▶ Door open/close monitor (NO/C/NC).
- ▶ Adjustable door lock delay timer - (0, 2.5, 5, or 9 seconds).
- ▶ Mounting hardware included.



Available Mounting Brackets:



- SD-997SMB-AQ**
Surface-Mount Bracket
- For surface mount on the door jamb
 - 2 brackets included

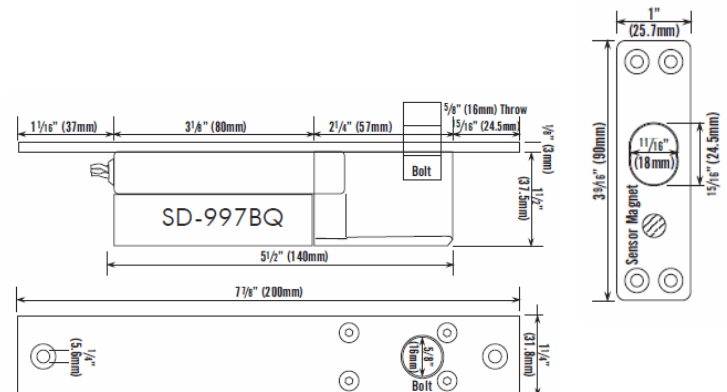


- SD-997UB-AQ**
"U" Bracket
for Glass Doors

Specifications:

Model Number	SD-997BQ
Operation	Fail-Safe
Current Draw	Standby: 360mA
	Activated: 900mA
Status Sensor	SPDT, 500mA @ 12VDC (N.O./C./N.C.)
Operation Voltage	12VDC
Adjustable Delay Timer	0, 2.5, 5, 9 seconds
Weight (approx.)	1lb., 13oz. (0.82kg.)

Dimensions:



SECO-LARM
16842 Millikan Avenue
Irvine, CA 92606

Tel: 1-949-261-2999
1-800-662-0800
Fax: 1-949-261-7326

Web: www.seco-larm.com
Email: info@seco-larm.com



Copyright © 2011
SECO-LARM U.S.A., Inc.
All rights reserved