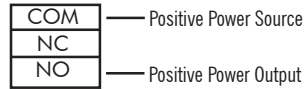
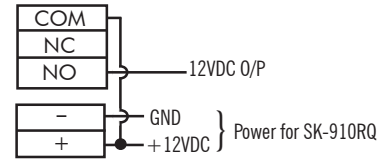


Typical Applications:

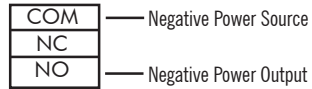
Positive Output:



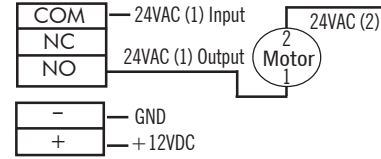
12VDC receiver power driving a 12VDC appliance:



Negative Output:



12VDC receiver power input, 24VAC output driving a motor



ENFORCER®

General Specifications

Operating Frequency:	315MHz (SK-910RQ, SK-910RLQ, SK-910R2Q, SK-910RVQ) 433.92MHz (SK-910R-4Q, SK-910RL-4Q, SK-910R2-4Q, SK-910RV-4Q)
Memory Capacity:	15 transmitter button codes per channel
Operating Voltage:	11.2 ~ 24VDC/VAC (for SK-910RQ / SK-910R-4Q / SK-910R2Q / SK-910R2-4Q) 5VDC ~ 13VDC (for SK-910RLQ / SK-910RL-4Q / SK-910RVQ / SK-910RV-4Q only)
Operating Current:	8 mA @ 12VDC (standby), 30mA/channel @ 12VDC (activated) 70mA @ 6VDC (activated), (SK-910RLQ / SK-910RL-4Q only)
Relay Contact Rating:	Form 'C' type; 10A @ 24VDC or 120VAC per channel (Transistor ground 5A output for SK-910RVQ / SK-910RV-4Q only)
Connectors:	Screw Terminals, +, -, with N.O., N.C., and COM per channel
Dimensions:	3.25" x 2.7" x 1.1" (83 x 68 x 27.5 mm)

Compatible Transmitters

315 MHz		433.92MHz	
SK-919TD1SQ	1-button, Fixed Code	SK-939TS1SQ	1-button, Fixed Code
SK-919TD2AQ	2-button, Fixed Code	SK-939TS2AQ	2-button, Fixed Code
SK-917T3AQ	3-button, Code Hopping	SK-937TS2AQ	2-button, Code Hopping
SK-917T2AQ	2-button, Code Hopping	SK-937TS3AQ	3-button, Code Hopping

WARRANTY: This SECO-LARM product is warranted against defects in material and workmanship while used in normal service for a period of one (1) year from the date of sale to the original consumer customer. SECO-LARM's obligation is limited to the repair or replacement of any defective part if the unit is returned, transportation prepaid, to SECO-LARM.

This Warranty is void if damage is caused by or attributed to acts of God, physical or electrical misuse or abuse, neglect, repair, or alteration, improper or abnormal usage, or faulty installation, or if for any other reason SECO-LARM determines that such equipment is not operating properly as a result of causes other than defects in material and workmanship.

The sole obligation of SECO-LARM, and the purchaser's exclusive remedy, shall be limited to replacement or repair only, at SECO-LARM's option. In no event shall SECO-LARM be liable for any special, collateral, incidental, or consequential personal or property damages of any kind to the purchaser or anyone else.

NOTICE: The information and specifications printed in this manual are current at the time of publication. However, the SECO-LARM policy is one of continual development and improvement. For this reason, SECO-LARM reserves the right to change specifications without notice. SECO-LARM is also not responsible for misprints or typographical errors.

Copyright © 2008 SECO-LARM U.S.A., Inc. All rights reserved. This material may not be reproduced or copied, in whole or in part, without the written permission of SECO-LARM.

SECO-LARM® U.S.A., Inc.

16842 Millikan Avenue, Irvine, CA 92606

Tel: 800-662-0800 / 949-261-2999 Fax: 949-261-7326

Website: www.seco-larm.com

E-mail: sales@seco-larm.com

FILE: D:\DTP\MANUAL\MuSK910R_0806.pmd
ORDER PART# 762-091-11%
PITSW1

SK-910 Series RF Receivers with 4 output Modes (Validity, 1-sec. Momentary, 4-sec. Momentary , Toggle)

Model

SK-910RQ One-channel receiver, 315MHz

SK-910RLQ Low-voltage, one-channel receiver, 315MHz

SK-910R2Q Two-channel receiver, 315MHz

SK-910RVQ Low-voltage, one-channel receiver,
transistor ground output, 315 MHz

SK-910R-4Q One-channel receiver, 433.92MHz

SK-910RL-4Q ... Low-voltage, one-channel receiver, 433.92MHz

SK-910R2-4Q ... Two-channel receiver, 433.92MHz

SK-910RV-4Q ... Low-voltage, one-channel receiver,
transistor ground output, 433.92 MHz

SECO-LARM®

Note: Products with a model number that ends with "Q" or have a green "Q" sticker are RoHS compliant.

System

These RF receivers are compatible with both code hopping and fixed-code transmitters (see page 4 of this manual for a list of compatible transmitters). They can be used for a variety of applications, such as allowing the same transmitter to arm/disarm a vehicle alarm and open/close a garage door opener. The receivers come in one- or two-channel versions. Each channel can learn the codes of up to 15 different transmitter buttons on a first-in, first-out basis.

Installation Notes

1. Mount out of sight in a location where it is not surrounded by metal, and where it is not exposed to the weather or moisture. Metal will block the RF signal, resulting in a reduced range.
2. For best range, pull the antenna wire as long and straight as possible. If the receiver receives interference from local RF activity (e.g., airport or military base), the antenna wire can be folded. **DO NOT CUT THE ANTENNA WIRE.**

Learning a New Button Code (channel 1)

1. Press mode switch #1 for three seconds. The green LED will start to flash quickly.
2. While the green LED is flashing quickly, press a button on a compatible transmitter. The green LED will flash once and then turn off to show that that button was learned.
3. Repeat steps 1 and 2 to learn more buttons into channel 1.

NOTE — The green LED will flash a maximum of 15 seconds. If no transmitter button is pressed during this time, the receiver will exit the code-learning mode, and the green LED will turn off.

Learning a New Button Code (channel 2)

The procedure is the same as for channel 1, except mode switch #2 initiates the code-learning process, and the red LED shows status.

Note Regarding Code Learning

1. The receiver will only learn the code of a particular button once. Once a button's code is learned, if you try to code-learn that button again, whether it is for the same channel or not, the receiver will exit code learning mode.
2. Each channel can learn the codes of a maximum of 15 transmitter buttons. If you attempt to learn a sixteenth button, the earliest code learned will be deleted.
3. To clear all codes — Press the appropriate mode switch (#1 or #2) for three seconds. When the LED starts flashing, press that switch again for three seconds. The LED flashes twice to indicate that all codes associated with that channel are now deleted.

Programming Relay Output Modes

The relay output(s) can be programmed for one of four different modes, depending on the application:

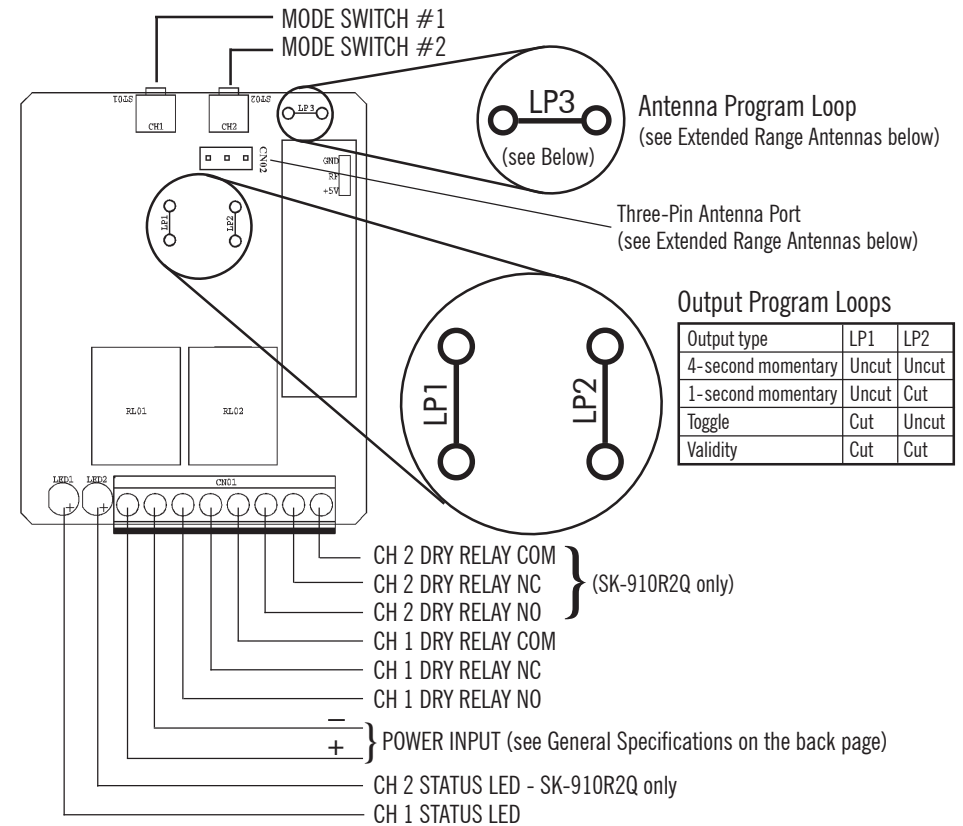
- 4-second momentary — Press the transmitter button once. The relay turns on for 4 seconds, and then turns off. (This is the DEFAULT mode)
- 1-second momentary — Press the transmitter button once. The relay turns on for 1 second, and then turns off.
- Toggle — Press the transmitter button once, and the relay turns on. Press a compatible transmitter button again, and the relay turns off.
- Validity — The relay turns on for as long as the transmitter button is pressed.

To program outputs, open case and find the 2 jumpers marked LP1 and LP2. Cut these jumpers, if needed, as shown on Table 1:

Table 1 – Programming relay output modes

Output type	LP1	LP2
4-second momentary	Uncut	Uncut
1-second momentary	Uncut	Cut
Toggle	Cut	Uncut
Validity	Cut	Cut

NOTE — On the 2-channel models, the output mode of both relays is the same. In other words, you cannot have 4-second momentary output for channel 1 and latch output for channel 2.

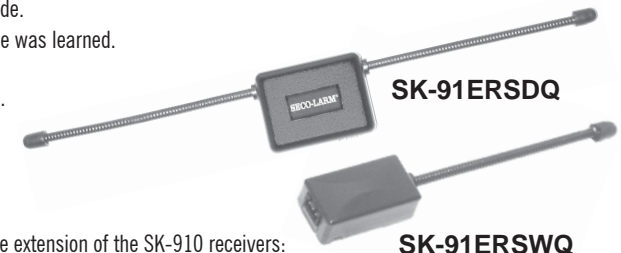


Mode Switch Operation (one per channel)

- Learn mode — Press and hold the switch for three seconds.
- Clear memory — Press three seconds, then when the LED starts flashing, press again for three seconds to delete all previously learned codes.
- Memory Display — Press and release the mode switch to show number of codes stored. LED will flash a number of times to correspond to the number of codes stored.

LED Indication (one per channel)

- Steady on — Senses signal from a transmitter button whose code was already learned.
- Fast flash — In the code-learning mode.
- One flash — A transmitter button code was learned.
- Two flashes — All previously learned transmitter button codes were deleted.



Extended Range Antennas

Two antennas are now available for range extension of the SK-910 receivers:

SK-91ERSWQ Extends RF receiver range up to 900 feet (open air) with existing remote.

SK-91ERSDQ Extends RF receiver range up to 1600 feet (open air) with existing remote.

These antennas come with a 9' cable which easily plugs into the 3-pin antenna port located on the RF receiver (See SK-910RQ/R2Q PC board diagram - above).

Note: If an extended range antenna is used with either receiver, the loop on the receiver PC board marked "LP3" must be cut.