

SECO-LARM®

Weatherproof Door/Gate Strike

SD-995A-D3Q

Installation Manual



The SECO-LARM Weatherproof Door/Gate Strike is suitable for outdoor use for both gates and doors. It is fail-secure to remain locked even when power is lost and is reversible for right- or left-handed gates/doors.

- 12~24 VAC/VDC operation
- Current draw: 500mA@12VDC, 1A@24VDC
- Fail-secure operation – Door remains locked if power to the strike is lost
- Strike depth: $\frac{9}{16}$ " (15mm)
- 1,034-lb (470kg) Static strength
- Tested to 250,000 cycles
- Can be used with an optional digital keypad, pushbutton switch, or other entry device
- Zinc alloy body
- Corrosion-resistant case and moving parts
- Reversible non-handed design fits either right-hand or left-hand doors
- Unique design accommodates both wood and metal doors
- Faceplate size: $3\frac{1}{2}$ "x $1\frac{7}{16}$ "x $\frac{1}{8}$ " (89x35x3 mm)
- Complete mounting hardware included

SECO-LARM®

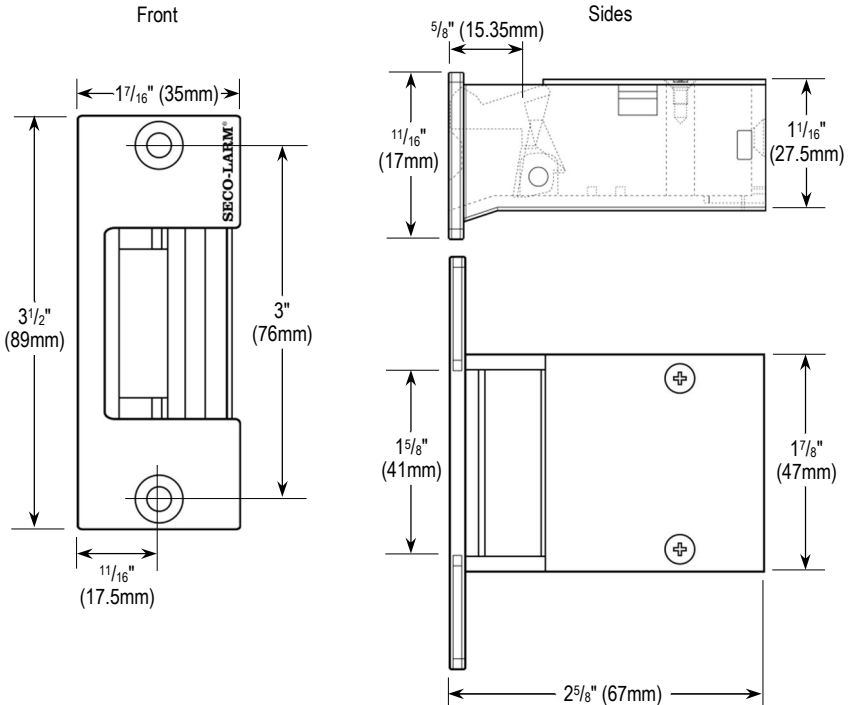
Parts List

1x Door strike	2x Wood screws	4x Machine screws	2x Mounting tabs
1x Mounting template	2x Crimp connectors	1x Manual	

Specifications

Operating voltage	12~24 VAC/VDC
Operation type	Fail-secure
Current draw	500mA
12VDC	1A
24VDC	
Latch throw	$\frac{9}{16}$ " (15mm)
Strike depth	$\frac{9}{16}$ " (15mm)
Keeper width	$1\frac{5}{8}$ " (41mm)
Design	Non-handed, reversible
Static strength	1,034-lb (470kg)
Endurance	250,000 Cycles (factory tested)
IP Rating	IP42 Weather-resistant
Operating humidity	0~95%, non-condensing
Operating temperature	14°~113° F (-10°~45° C)
Faceplate dimensions	$1\frac{7}{16}$ "x $3\frac{1}{2}$ "x $1\frac{1}{8}$ " (35x89x3 mm)

Overview



Installation

1. Measure the center line of the door latch from the top of the door frame. This is "Y" on the diagram in Fig. 1, right.
2. Measure the distance from the door latch to the edge of the door frame. Ignore the deadlatch pin when taking measurements. This is the door latch line. This is shown as "X" on the diagram in Fig. 2.
3. Measure distance "X" from the side of the door frame, and distance "Y" from the top of the door frame. Use a pencil to mark the two lines' exact intersection spot (see Fig. 3).
4. Carefully peel off the short, thin tab in the center of the stick-on template. When placed against the frame, this template opening will line up with the X-Y mark. Peel the template from its backing and carefully apply to the frame.
5. Using the template as a guide, cut into the door frame to a depth of $\frac{3}{4}$ " (19mm).

NOTE: If cutting into a wooden frame, use a chisel to knock out a $\frac{1}{8}$ " (3mm) deep cut as shown on the template.

6. For metal frames, affix the mounting tabs to the inside of the door frame using two of the included machine screws, (see Fig. 4).
7. Connect the two wires from the access control or egress device, e.g. keypad, pushbutton switch, push bar, etc., to the door strike wires. Polarity is not important.
8. Conceal all wires in the door frame.
9. Use two of the included machine screws to mount the unit to the mounting tabs (for wooden frames, use the two included wood screws to mount the unit directly to the frame). Adjust as needed to ensure the door closes smoothly, and that it properly catches the door latch (see Fig. 5).

NOTE: This device is for intermittent duty use only and should be activated less than 20 seconds per cycle

Fig. 1

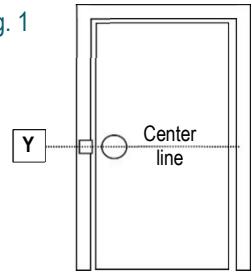


Fig. 2

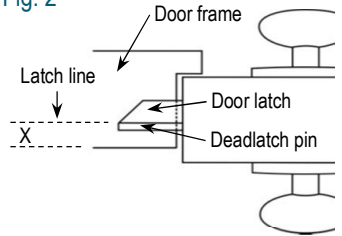


Fig. 3

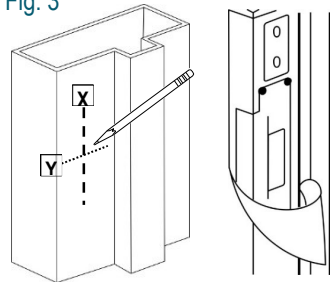


Fig. 4

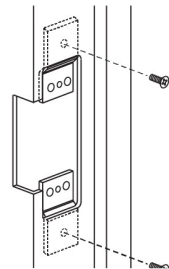
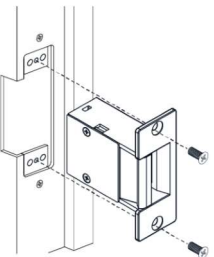


Fig. 5



Troubleshooting

Electric strike does not activate

- Remove the strike and check that the two wires are connected properly
- Ensure the wires are connected to a 12VDC source
- Use a multimeter to test that the strike is receiving the proper voltage and amperage. If it is not, it may be necessary to use heavier gauge wires, or increase the output of the power supply
- Make sure the activation device (keypad, pushbutton switch, etc.) is working properly

Door does not open when the electric strike is activated

- Check that the door latch is operating properly and replace if necessary
- The position of the electric strike may need to be adjusted by moving it or adding washers or shims

IMPORTANT: Users and installers of this product are responsible for ensuring that the installation and configuration of this product complies with all national, state, and local laws and codes. SECO-LARM will not be held responsible for the use of this product in violation of any current laws or codes.

California Proposition 65 Warning: These products may contain chemicals which are known to the State of California to cause cancer and birth defects or other reproductive harm. For more information, go to www.P65Warnings.ca.gov.

WARRANTY: This SECO-LARM product is warranted against defects in material and workmanship while used in normal service for three (3) years from the date of sale to the original customer. SECO-LARM's obligation is limited to the repair or replacement of any defective part if the unit is returned, transportation prepaid, to SECO-LARM. This Warranty is void if damage is caused by or attributed to acts of God, physical or electrical misuse or abuse, neglect, repair or alteration, improper or abnormal usage, or faulty installation, or if for any other reason SECO-LARM determines that such equipment is not operating properly as a result of causes other than defects in material and workmanship. The sole obligation of SECO-LARM and the purchaser's exclusive remedy, shall be limited to the replacement or repair only, at SECO-LARM's option. In no event shall SECO-LARM be liable for any special, collateral, incidental, or consequential personal or property damage of any kind to the purchaser or anyone else.

NOTICE: The SECO-LARM policy is one of continual development and improvement. For that reason, SECO-LARM reserves the right to change specifications without notice. SECO-LARM is also not responsible for misprints. All trademarks are the property of SECO-LARM U.S.A., Inc. or their respective owners. Copyright © 2024 SECO-LARM U.S.A., Inc. All rights reserved.

SECO-LARM® U.S.A., Inc.

16842 Millikan Avenue, Irvine, CA 92606

Phone: (949) 261-2999 | (800) 662-0800

Website: www.seco-larm.com

Email: sales@seco-larm.com

 PITGW1

MI_SD-995A-D3Q_240808.docx