

HD 2MP 2.8mm Turret Camera

EV-Y2251-A2WQ 2.8mm Fixed Lens

HD

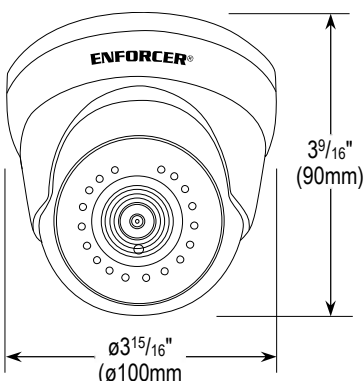
The ENFORCER HD 2MP Fixed Turret Camera offers high-resolution video and advanced technology in a compact and accessible package. With Digital Noise Reduction (3DNR) and Day/Night (ICR) capabilities, the camera provides excellent picture quality.

Features

- 1/2.7" 2MP CMOS Sensor
- 1080p Resolution (1920x1080)
- 2.8mm Fixed lens
- TVI, CVI, AHD, CVBS (Analog)
- Digital Wide Dynamic Range (DWDR)
- 3D Digital Noise Reduction (3DNR)
- True Day & Night Function with ICR Module
- IR Range 65' (20m)
- Operating temperature: -40°~131° F (-40°~55° C)
- Rugged weatherproof construction (IP66)
- Heavy-duty vandal-resistant design
- Cables concealed in bracket to prevent tampering
- 12VDC

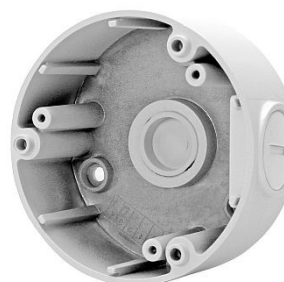


Dimensions



Accessories

Junction Box



EV-SSWQ

SECO-LARM® U.S.A., Inc.

16842 Millikan Avenue, Irvine, CA 92606

Phone: (949) 261-2999 | (800) 662-0800 Fax: (949) 261-7326

Website: www.seco-larm.com Email: sales@seco-larm.com



Copyright © 2023 SECO-LARM U.S.A., Inc. All rights reserved.
All trademarks are the property of SECO-LARM U.S.A., Inc. or their respective owners.
The SECO-LARM policy is one of continual development. For that reason, SECO-LARM reserves the right to change prices and specifications without notice. SECO-LARM is not responsible for misprints.

SECO-LARM® ENFORCER® CRIMEBUSTER® CBA® SLI®

PI_EV-Y2251-A2WQ_230221.docx

Camera

Image sensor	1/2.7" 2MP CMOS
Effective pixels	1920(H)x1080(V)
Formats	TVI (Default) / CVI / AHD / Analog (CVBS)
OSD (On-screen display)	Yes
S/N ratio	35db
Minimum illumination	Color: 0.05Lux at F1.6 (AGC on) 0Lux with IR on
IR Distance	Distance up to 65' (20m)
IR LEDs	18x SMT LEDs

Lens

Lens type	Fixed
Focal length	2.8mm
Maximum aperture	F1.6
Field of view	121°

Video

Resolution	1920x1080
DWDR	Yes
Shutter control	Auto
White balance	Auto
Gain control	Auto
Noise reduction	3DNR
Privacy masking	Off, on (4 areas, rectangle)

Certifications

Certifications	CE, FCC, RoHS
----------------	---------------

Electrical

Operating voltage		12VDC
Current Draw	IR On	320mA
	IR Off	80mA

Environmental

Operating temperature	-22°~131° F (-30°~55° C)
IP Rating	IP66 Weatherproof

Construction

Casting	Metal
Dimensions	ø3 ¹⁵ / ₁₆ "x3 ⁹ / ₁₆ " (ø100x90 mm)
Weight	16.72-oz (474g)