

## Match the ENFORCER Open-Frame Transformers with the ENFORCER Series Power Supply/Chargers

ST-1206-1.5AQ	1.5A continuous.	6/12 VDC
ST-2406-2AQ	1.5A continuous.	6/12/24 VDC
ST-2406-3AQ	2.5A continuous.	6/12/24 VDC
ST-2406-5AQ	4.0A continuous.	6/12/24 VDC
ST-2406-7AQ	7.0A continuous.	6/12/24 VDC
ST-2406-10AQ	9.0A continuous.	6/12/24 VDC

Convert low-voltage AC input power to low-voltage DC output power.

- Regulated and filtered output voltage.
- Short-circuit protection.
- Thermal protection and compensation.
- Built-in backup battery charger.
- Switches to backup battery automatically in case of power loss.
- Fused protection for battery charger.
- 2 LEDs to indicate AC power input and DC power output status.
- Compatible with lead acid or gel-type rechargeable battery.
- Reverse polarity protected.



ST-2406-2AQ shown

Output Voltage:	ST-2406-2AQ	ST-2406-3AQ	ST-2406-5AQ	ST-2406-7AQ	ST-2406-10AQ
6VDC	12VAC/20VA	ST-UV16-W50Q ST-UV24-W50Q	ST-UV16-W100Q 16VAC/100VA	ST-UVDA-W180Q 24-28VAC/180VA	ST-UVDA-W180Q 24-28VAC/180VA
12VDC	ST-UV16-W50Q 16VAC/50VA	ST-2424-W100Q 24VAC/100VA	ST-2424-W100Q 24VAC/100VA	ST-UVDA-W180Q 24-28VAC/180VA	ST-UVDA-W180Q 24-28VAC/180VA
24VDC	ST-UV24-W50Q 24VAC/50VA	ST-2424-W100Q 24VAC/100VA	ST-UVDA-W180Q 24-28VAC/180VA	ST-1228-T350Q 28VAC/350VA	ST-1228-T350Q 28VAC/350VA

**California Proposition 65 Warning:** These products may contain chemicals which are known to the State of California to cause cancer and birth defects or other reproductive harm. For more information, go to [www.P65Warnings.ca.gov](http://www.P65Warnings.ca.gov).

**WARRANTY:** This SECO-LARM product is warranted against defects in material and workmanship while used in normal service for a period of one (1) year from the date of sale to the original consumer customer. SECO-LARM's obligation is limited to the repair or replacement of any defective part if the unit is returned, transportation prepaid, to SECO-LARM.

This Warranty is void if damage is caused by or attributed to acts of God, physical or electrical misuse or abuse, neglect, repair, or alteration, improper or abnormal usage, or faulty installation, or if for any other reason SECO-LARM determines that such equipment is not operating properly as a result of causes other than defects in material and workmanship.

The sole obligation of SECO-LARM, and the purchaser's exclusive remedy, shall be limited to replacement or repair only, at SECO-LARM's option. In no event shall SECO-LARM be liable for any special, collateral, incidental, or consequential personal or property damages of any kind to the purchaser or anyone else.

**NOTICE:** The information and specifications printed in this manual are current at the time of publication. However, the SECO-LARM policy is one of continual development and improvement. For this reason, SECO-LARM reserves the right to change specifications without notice. SECO-LARM is also not responsible for misprints or typographical errors. Copyright 2021 SECO-LARM U.S.A., Inc. All rights reserved. This material may not be reproduced or copied, in whole or in part, without the written permission of SECO-LARM.

### SECO-LARM® U.S.A., Inc.

16842 Millikan Avenue, Irvine, CA 92606  
Tel: 800-662-0800 / 949-261-2999 Fax: 949-261-7326  
Website: [www.seco-larm.com](http://www.seco-larm.com)  
E-mail: [sales@seco-larm.com](mailto:sales@seco-larm.com)

 UL recognized component

Order Part # 764-006-3%  
MI\_ST-2424-W100Q\_201229.pmd

# ENFORCER®

## Open-Frame Transformers

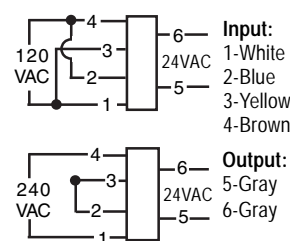
- ST-UV16-W50Q – Open-Frame Transformer, 16VAC, 50W
- ST-UV24-W50Q – Open-Frame Transformer, 24VAC, 50W
- ST-UV16-W100Q – Open-Frame Transformer, 16VAC, 100W
- ST-UV24-W100Q – Open-Frame Transformer, 24VAC, 100W
- ST-2424-W100Q – Open-Frame Transformer, 24VAC, 100W
- ST-UVDA-W100Q – Open-Frame Transformer, 24/28VAC, 100W\*
- ST-UVDA-W180Q – Open-Frame Transformer, 24/28VAC, 180W\*

\*Dual Voltage output: 24VAC or 28VAC

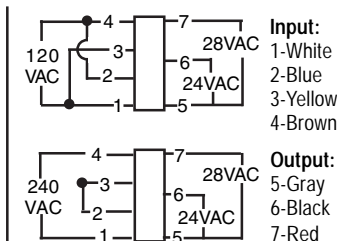
### Wiring Diagrams:

How to wire the transformer depends on input voltage. Determine input voltage using Volt/Ohm meter before wiring input wires.

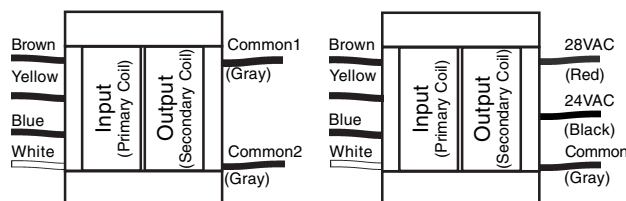
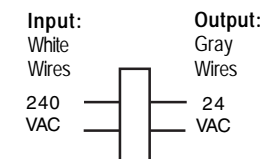
ST-UV16-W50Q  
ST-UV16-W100Q  
ST-UV24-W100Q  
ST-UV24-W50Q



ST-UVDA-W100Q  
ST-UVDA-W180Q



ST-2424-W100Q



Note: Cap unused wire to avoid shorting wires.

### Specifications:

Model	Output Voltage	Amperage	VA	Input Voltage
ST-UV16-W50Q	16VAC	3.0	50VA	120VAC or 240VAC 50/60Hz
ST-UV24-W50Q	24VAC	2.0	50VA	
ST-UV16-W100Q	16VAC	6.0	100VA	
ST-UV24-W100Q	24VAC	4.0	100VA	
ST-UVDA-W100Q	24VAC	4.0	100VA	
	28VAC	3.0	100VA	
ST-UVDA-W180Q	24VAC	7.0	180VA	240VAC 50/60Hz
	28VAC	6.0	180VA	
ST-2424-W100Q	24VAC	4.0	100VA	