

# SECO-LARM®

## L-Bracket

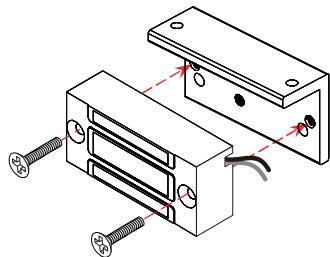
for E-941SA-80Q,  
80-lb Miniature Electromagnetic Lock

E-941S-80A/LQ

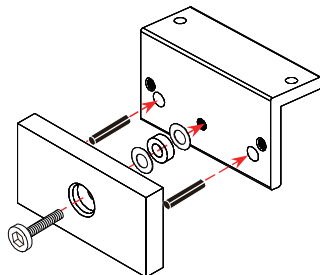


### Mounting Bracket Options

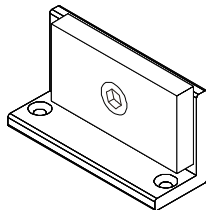
- Maglock mounting



- Amature mounting



- May also be flipped for some installations



## SECO-LARM®

www.seco-larm.com

Copyright © 2023 SECO-LARM U.S.A., Inc.



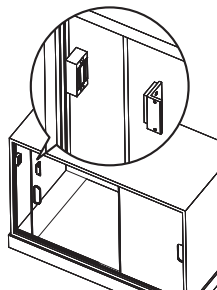
**NOTICE:** The SECO-LARM policy is one of continual development and improvement. For that reason, SECO-LARM reserves the right to change specifications without notice. SECO-LARM is also not responsible for misprints.

Copyright © 2023 SECO-LARM U.S.A., Inc. All rights reserved. This material may not be reproduced or copied, in whole or in part, without the written permission of SECO-LARM.

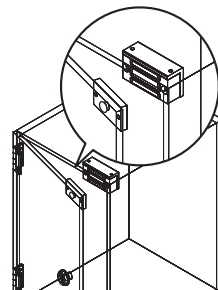
1PC



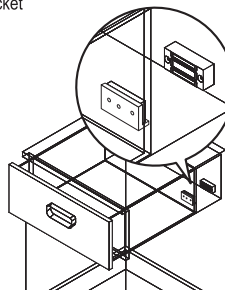
### Sample Installations



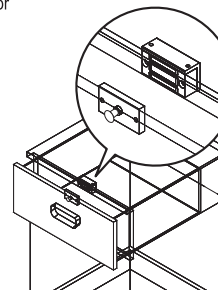
Mounting the magnet to the cabinet side and the armature to the back of the sliding door with the L-bracket



Mounting the magnet to the cabinet top with the L-bracket and the armature to the inside of the door



Mounting the magnet to the cabinet back and the armature to the drawer back (with or without the L-bracket)



Mounting the magnet to the cabinet top with the L-bracket and the armature to the inside of the drawer front