

Post-Mount Housings

BP-611 – Slimline cutout

BP-601 – No cutout, solid faceplate



BP-611

BP-601

Precut for slimline and most of our single-gang devices or customize the solid faceplate for other devices.

RTE Plate with green mushroom cap push button



Sealed Housing Weatherproof Stand-Alone Digital Access Keypad



Wave-To-Open Sensor with Manual Override Button



Hinged Faceplate

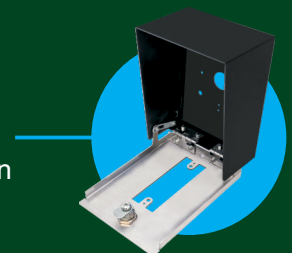
Weather-proof

Rugged Housing

Hardware Included

- Easy access, hinged faceplate
- Available with or without faceplate cutout
- Rugged steel, powder paint housing with stainless steel faceplate
- IP65 Weatherproof

Unique hinged faceplate allows for easy installation



Contact SECO-LARM for more information

(800) 662-0800 (949) 261-7326 sales@seco-larm.com www.seco-larm.com 16842 Millikan Ave. Irvine, CA 92606

SECO-LARM® ENFORCER® CRIMEBUSTER® CBA® SLI®

SECO-LARM®

Manufacturer of ENFORCER®