

# SECO-LARM®

## Fire Rated No-Cut Electric Door Strike

SD-995C-D3F

### Installation Manual



Fire-rated and built to last, the SECO-LARM Fire Rated No-Cut Electric Door Strike combines safety and convenience with a sleek 1<sup>1</sup>/<sub>16</sub>" profile and easy installation on aluminum frames. With a 1-million cycle durability and seamless compatibility with panic hardware, it's the smart, worry-free choice for secure indoor access.

- ETL Listed. Conforms to UL Std. 10C, 10B, CAN/ULCS 104, and NFPA 252
- Low profile: Strike is only 1<sup>1</sup>/<sub>16</sub>" deep for use with aluminum & metal frames
- Field selectable for fail-safe or fail-secure operation
- Mounting tabs included for mounting to hollow aluminum & metal frames
- Reversible non-handed design fits either right-hand or left-hand doors
- For indoor use only
- Static strength – 1,500-lb (680kg)
- Dynamic strength – 70ft-lb (9.68m-kg)
- 12/24 VDC Operating voltage
- Tested to 1,000,000 cycles (Factory Tested)
- The SD-995C-D3F is in accordance with NFPA70
- The SD-995C-D3F is intended to be used with UL Listed Exit Hardware
- The SD-995C-D3F shall not impair the intended operation of an emergency exit
- The SD-995C-D3F shall not impair the operation of panic hardware mounted on the door
- To maintain the fire rating, the SD-995C-D3F must be used in Fail-Secure mode only. If it is used in Fail-Safe mode, the fire rating becomes invalid, and the 'Listed Fire Rated Hardware' label must be removed.

**NOTE:** SD-995C-D3F has no horizontal or vertical adjustments.

**SECO-LARM®**

# SECO-LARM Fire Rated No-Cut Electric Door Strike

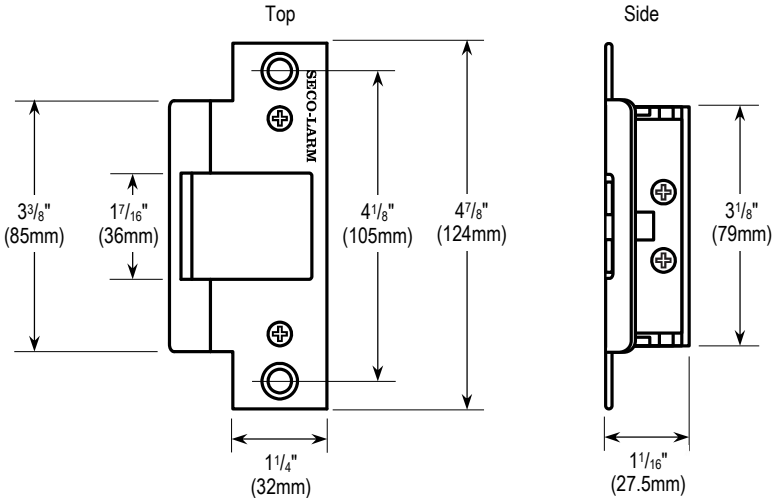
## Parts List

1x Door strike	2x Mounting tabs	2x Machine screws (narrow)	2x Electrical connectors
2x Wood screws	2x Security screws	2x Wiring connectors	1x Manual
4x Machine screws	2x Anchor nuts		

## Specifications

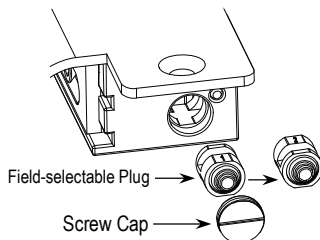
Operating voltage	12/24 VDC
Current draw	12VDC: 300mA 24VDC: 150mA
Latch throw	$\frac{3}{4}$ " (19mm)
Keeper width	$\frac{17}{16}$ " (36mm)
Endurance	1,000,000 cycles (Factory Tested), Level IV
Destructive attack	Level I
Line security	Level I
Standby power	Level I
Static strength	1,500-lb (680kg)
Dynamic strength	70ft-lb (9.68m-kg)
Operating humidity	0~85% non-condensing
Operating temperature	14°~120° F (-10°~49° C)
Dimensions	$4\frac{7}{8}$ "x $1\frac{1}{4}$ "x $1\frac{1}{16}$ " (124x32x27.5 mm)
Weight	11.3-oz (320g)

## Overview



## Selecting Fail-Safe or Fail-Secure

- Using a flathead screwdriver, unscrew and remove the screw cap to access the field-selectable plug.
- For fail-safe operation, rotate the field-selectable plug so that "1" is facing up.
- For fail-secure operation, rotate the field-selectable plug so that "2" is facing up (Default).
- Replace the field-selectable plug in the correct orientation and screw the screw cap back into place.



**NOTE:** To maintain the fire rating, the strike must be used in Fail-Secure mode only. If it is used in Fail-Safe mode, the fire rating becomes invalid, and the 'Listed Fire Rated Hardware' label must be removed.

## Installation

- Measure the latch line (see Fig. 1).
  - Measure the distance between the face of the door jamb and the face of the door latch. This is the vertical latch distance.
  - Measure the vertical latch distance on the door jamb from the face of the door jamb. At that point, draw a vertical line. This is the latch line.
- Measure the center line (see Fig. 2).
  - Measure the distance from the floor to the center of the door latch. Ignore the location of the deadlatch pin when taking measurements.
  - Measure the same distance as above along the inside of the door jamb. This is the center line.
- Align the included mounting template to the latch and center lines (see Fig. 3).
- To mount the strike where the hollow door frame material is unsuitable for mounting, install the provided mounting tabs (see Fig. 4).
- Before installing the door strike, program for either fail-safe or fail-secure operation. See *Selecting Fail-Safe or Fail-Secure*, pg. 2.
- Conceal all wires in the door frame. Use two of the included machine screws to mount the unit to the mounting tabs. Adjust as needed to ensure the door closes smoothly (see Fig. 5).
- Connect to power. See "Wiring Diagram," pg. 4.

Fig. 1

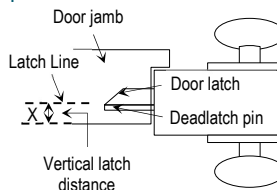


Fig. 2

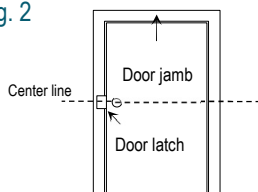
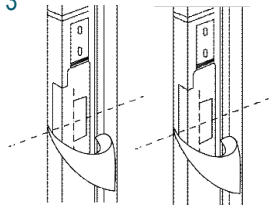


Fig. 3



**NOTE:** SD-995C-D3F has no horizontal or vertical adjustments.

Fig. 4

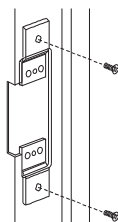
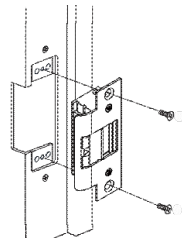
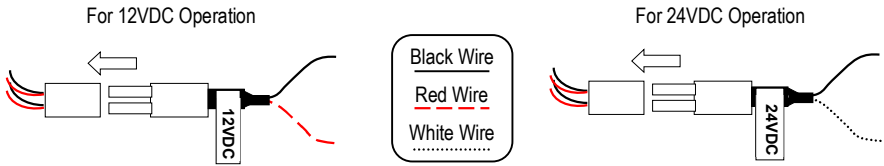


Fig. 5



## Wiring Diagram



## Troubleshooting

Electric strike does not activate

- Dismount the strike and check that the wiring connector is connected properly.
- Ensure the wiring connector is connected to a 12 or 24VDC source.
- Use a multimeter to test that the strike is receiving the proper voltage and amperage. If it is not, it may be necessary to use heavier gauge wires, or increase the output of the power supply.
- Make sure the activation device (keypad or push-button switch) is working properly.

Door does not open when the electric strike is activated

- Check that the door latch is operating properly, and replace if necessary.
- The position of the electric strike may need to be adjusted by moving it or adding washers or shims.

Strike makes a buzzing sound

- Connect the strike to a DC power supply.

**NOTE:** SD-995C-D3F has no horizontal or vertical adjustments

**IMPORTANT WARNING:** Incorrect mounting which leads to exposure to rain or moisture inside the enclosure could cause a dangerous electric shock, damage the device, and void the warranty. Users and installers are responsible for ensuring that this product is properly installed and protected from moisture.

**IMPORTANT:** Users and installers of this product are responsible for ensuring that the installation and configuration of this product complies with all national, state, and local laws and codes. SECO-LARM will not be held responsible for the use of this product in violation of any current laws or codes.

**California Proposition 65 Warning:** These products may contain chemicals which are known to the State of California to cause cancer and birth defects or other reproductive harm. For more information, go to [www.P65Warnings.ca.gov](http://www.P65Warnings.ca.gov).

**WARRANTY:** This SECO-LARM product is warranted against defects in material and workmanship while used in normal service for one (1) year from the date of sale to the original customer. SECO-LARM's obligation is limited to the repair or replacement of any defective part if the unit is returned, transportation prepaid, to SECO-LARM. This Warranty is void if damage is caused by or attributed to acts of God, physical or electrical misuse or abuse, neglect, repair or alteration, improper or abnormal usage, or faulty installation, or if for any other reason SECO-LARM determines that such equipment is not operating properly as a result of causes other than defects in material and workmanship. The sole obligation of SECO-LARM and the purchaser's exclusive remedy, shall be limited to the replacement or repair only, at SECO-LARM's option. In no event shall SECO-LARM be liable for any special, collateral, incidental, or consequential personal or property damage of any kind to the purchaser or anyone else.

**NOTICE:** The SECO-LARM policy is one of continual development and improvement. For that reason, SECO LARM reserves the right to change specifications without notice. SECO-LARM is also not responsible for misprints. All trademarks are the property of SECO-LARM U.S.A., Inc. or their respective owners. Copyright © 2025 SECO-LARM U.S.A., Inc. All rights reserved.

**SECO-LARM® U.S.A., Inc.**

16842 Millikan Avenue, Irvine, CA 92606  
Phone: (949) 261-2999 | (800) 662-0800

Website: [www.seco-larm.com](http://www.seco-larm.com)  
Email: [sales@seco-larm.com](mailto:sales@seco-larm.com)

 PITGW1

2

MI\_SD-995C-D3F\_250715.docx