

Fire-Rated and Ready

- ETL Listed Conforms to UL Std. 10C, 10B, CAN/ULCS 104, and NFPA 252
- Low profile: Strike is only 1 1/16" deep for use with aluminum & metal frames
- Field selectable for fail-secure or fail-safe operation
- Static strength – 1,500-lb (680kg)



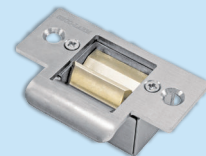
Also available from **SECO-LARM**



Fire Rated No-Cut Door Strike
SD-995C-D3F



No-Cut Door Strike
SD-995C-D3Q



Mini No-Cut Door Strike
SD-991A-D1Q